

**Portomarea Marine Monitoring Reef Ball Coral Plugs  
West side of bay, Cluster 10  
January 2003**

Finger coral plug on Ultra transplanted march 2001.



July 2002



October 2002



January 2003

**Portomarea Marine Monitoring Reef Ball Coral Plugs  
West side of bay, Cluster 10  
January 2003**

Purple Sea Rod transplanted march 2001.



July 2002 survey period



October 2002 survey period



January 2003 survey period

**Portomarea Marine Monitoring Reef Ball Coral Plugs  
West side of bay, Cluster 10  
January 2003**

Staghorn coral plug transplanted march 2001.



July 2002 survey period



October 2002 survey period (photo angle rotated 45 degrees clockwise)



January 2003 survey period

**Portomarea Marine Monitoring Reef Ball Coral Plugs  
West side of bay, Cluster 10  
January 2003**

Staghorn coral plug transplanted march 2001



July 2002 survey period. Algae on branches



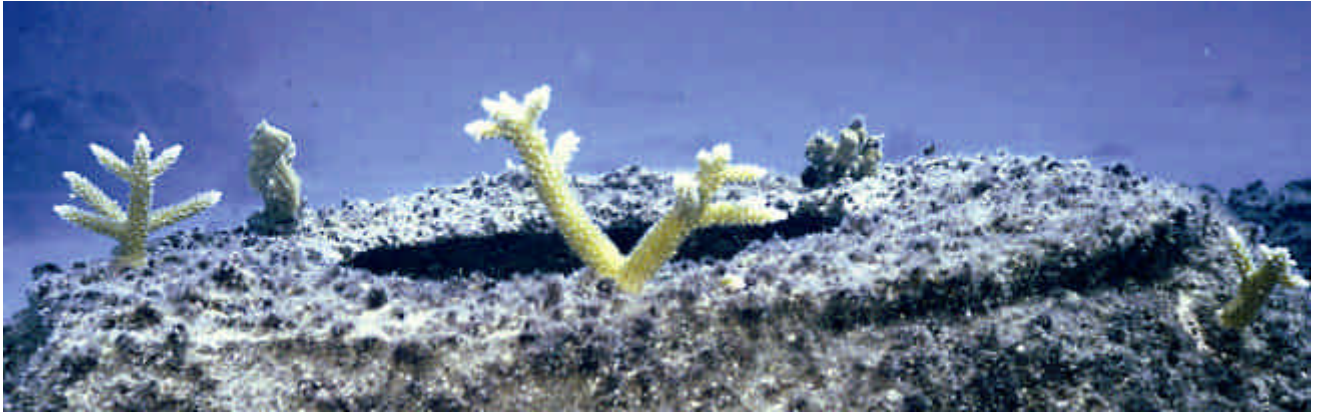
October 2002 survey period. Algae gone.



January 2003 survey period.

**Portomarea Marine Monitoring Reef Ball Coral Plugs  
East side of bay, Cluster 12  
January 2003**

Staghorn, Pencil and Lettuce coral plugs transplanted February 2002.



July 2002 survey period.



October 2002 survey period.



January 2003 survey period.